

ELECTRIC / HYDRAULIC SERVICE CRANE PSC 6025

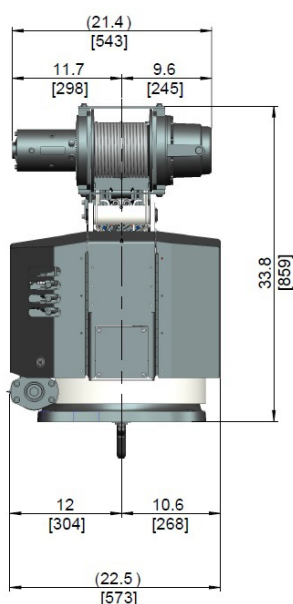
Superior Lifting System

LIFETIME EXCELLENCE



FEATURES

Meeting or exceeding all ASME and OSHA standards, PSC 6025 an Electric/Hydraulic, or Full Hydraulic Service Crane with 6,000 lbs. capacity. Just like all of our Service Crane models, PSC 6025 features Wireless Proportional Control, Single Weld Hexagonal Boom design exclusively E-coated by PALFINGER for the best rust protection in the industry.



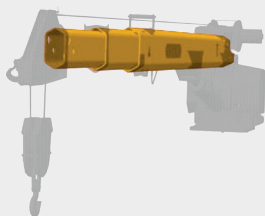
WINCH

Hydraulic planetary winch standard for speed, durability, and higher duty cycle. Boom mounted winch for consistent line length when raising or lowering boom.



PROPORTIONAL WIRELESS CONTROL

Push button style proportional wireless remote control, standard. Proportional control of all hydraulic functions is standard on all models.



HEXAGONAL BOOMS

Maintenance free high tensile strength self-centering single weld boom sections powered by internal extension cylinders.



CYLINDERS

All cylinders are E-coated and use a 5 stage marine grade seal system, exceeding ANSI B30.5 requirements.



INDUSTRY LEADING WARRANTY

2 years on all components,
3 year warranty on structural components.

IWC - INTELLIGENT WINCH CONSOLE

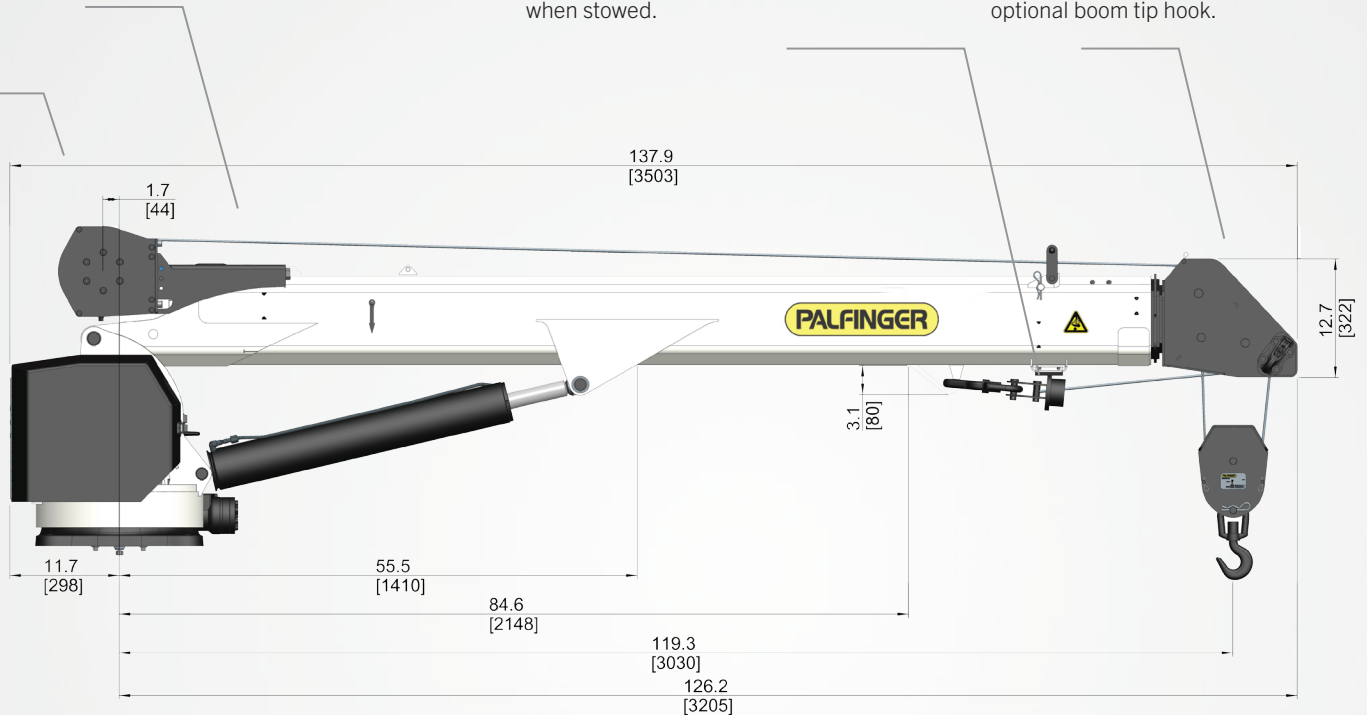
Two Block Damage Prevention System is integrated into winch mounting platform eliminating the need for boom tip apparatus and cord reel. Complies with ANSI B30.5

LOAD BLOCK STOWING BRACKET

Bracket and pads designed to keep load block from contacting the boom when stowed.

HORSE HEAD

No bail and limit switch to interfere in operation, low profile design, and optional boom tip hook.



E-COAT PROTECTION

Most rust resistant telescopic crane on the market.



MEDIA BLAST

A high quality exterior process that removes any surface imperfections and provides an optimized surface for E-coating.

E-COAT

Automotive grade and environmentally friendly coating process is applied with precision over the entire product ensuring superior corrosion protection.

TOP COAT

All E-coated steel components receive a white top coat finish that ensures maximum durability.



TECHNICAL SPECIFICATIONS

CRANE RATING

Rated lifting moment	38,500 ft. lbs. (52.2 kNm (5.3 mt))
Maximum lifting moment	43,730 ft. lbs. (66.5 kNm (5.9 mt))
Hydraulic outreach	25.0 ft. (7.6 m)
Crane weight Electric	1,280 lbs. (580 kg)
Crane weight Hydraulic	1,230 lbs. (560 kg)
Hydraulically powered extensions	

CONTROL SYSTEM

Wireless remote control unit
Integrated E-stop button
Manual valve activation capability
Integrated warning horn
12V DC power supply

ROTATION SYSTEM

Slewing torque	5,545 ft. lbs. (7.5 kNm (0.8 mt))
Slewing angle Electric	Continuous rotation
Slewing angle Hydraulic	410 ° rotation

STANDARDS (meets or exceeds)

Crane	ANSI B30.5	OSHA 1910.28
Calculation	EN 12999 H1,B6	

PLANETARY GEAR WINCH

Max. winch force single line	3,000 lbs. (1,425 kg)
Max. winch force double line	6,000 lbs. (2,750 kg)
Max. line speed	51 ft./min (15.54 m/min)
Galvanized aircraft cable	95" x 5/16" (28.9 m x 7.9 mm)
Two-block damage prevention system	
3rd wrap end stop system option	

HYDRAULIC SYSTEM

Operating pressure	2,800 psi (19.3 Mpa (193 bar))
Required oil flow Hydraulic	5.2 GPM (20.0 L/min)
Electronic overload protection system	
Marine grade 5 seal system on all cylinders	
Non integrated load-holding valves on all cylinders	

CRANE | CHASSIS INTERFACE

Base plate dimension	17.75" x 17.75" (450 mm x 450 mm)
Hole pattern	14.75" x 14.75" (375 mm x 375 mm)
Mounting bolts	4 x 1" - 8 UNC

CHASSIS RECOMMENDATION

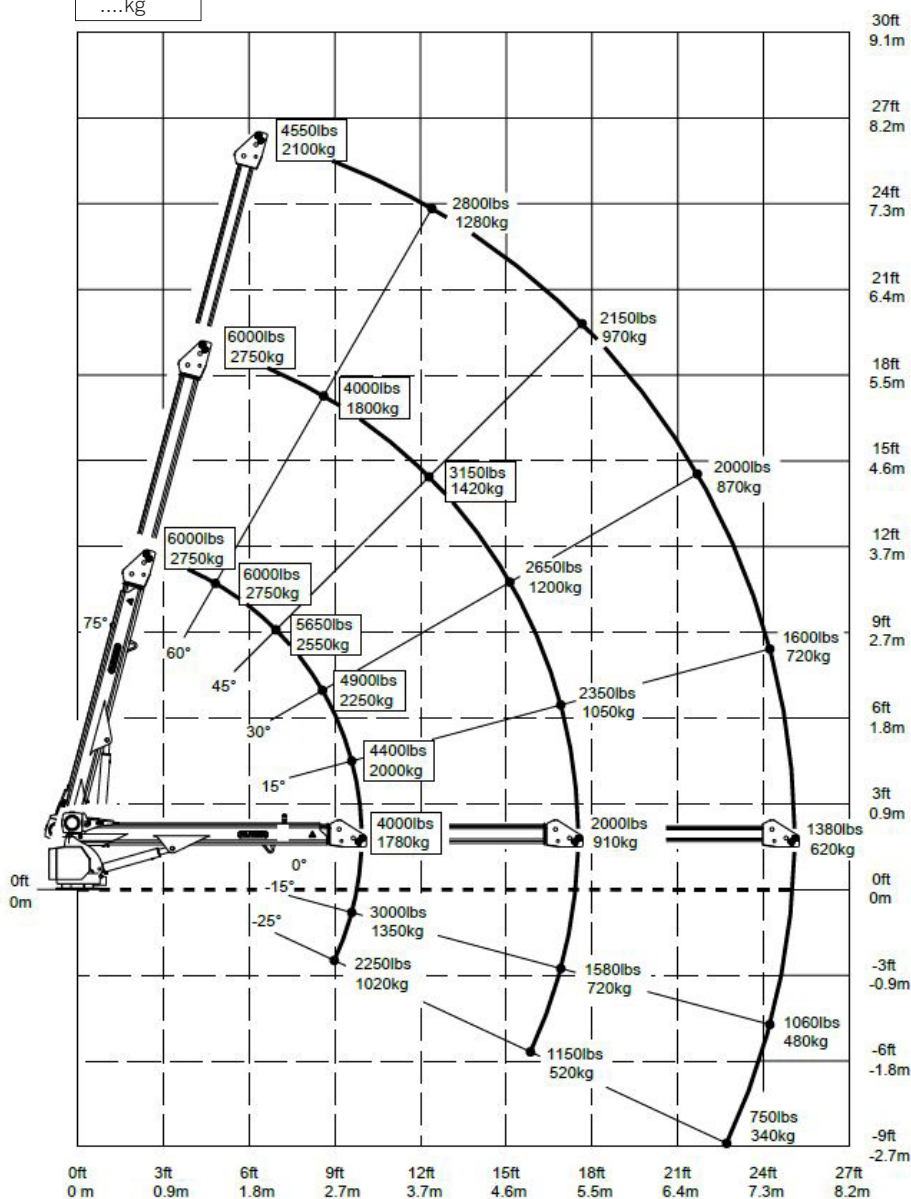
Chassis style	Conventional
Recommended GVWR	Class 4 (14,001 lbs. (6,350 kg))

Weights of load-handling devices are part of the load lifted and must be deducted from the capacity.

....lbs

....kg

Boxes denote two-part line required.



SERVICE CRANE

OPTIONS

Many optional features are available for PALFINGER Service Cranes to meet your demands on the job. Contact your PALFINGER Representative to learn more!



PERSONNEL BASKET - CRANE ACCESSORY - PATENT PENDING

Industry-first from PALFINGER designed specifically for Service Cranes with 5,000 lbs. capacity and above. Quickly set up and attach basket to crane for maximum efficiency on the job. Folds into a compact storage box and mounts onto the body for transport.

Personnel Basket Capacity:	300 lbs.
Personnel Basket Weight:	280 lbs.
Complete Installation (incl. Boxes):	400 lbs.



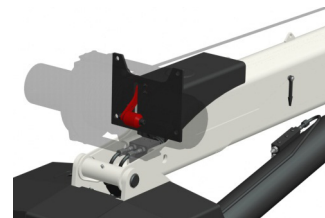
BOOM TIP HOOK

1.5 ton capacity boom tip hook, horsehead has threaded weldment for mounting.



THIRD WRAP LIMITING SYSTEM

Integrated system prevents wire rope spool off, ensuring three wraps remain on drum, exceeding ANSI B30.5.



AUDIBLE CAPACITY WARNING

105 db warning begins at 90% of load capacity and increases until crane reaches overload condition. Exceeds ANSI B30.5.

SERVICE CRANE

PRODUCT RANGE

TECHNICAL SPECIFICATIONS

MODEL	CAPACITY	RATED LIFTING MOMENT	MAX LIFTING MOMENT	BOOM EXTENSION	POWER OUTREACH	WINCH SPEED	STANDARD WEIGHT	MIN. CHASSIS SPECIFICATIONS
PSC 3216 EH / H	4,000 lbs. (1814kg)	12,500 ft. lbs. (17kNm (1.7mt))	14,560 ft. lbs. (19.6kNm (2.0mt))	1 Hydraulic + 1 Manual (2 Hydraulic Option)	11.4ft (16ft) 3.5m (4.9m)	19.6ft/min (6.0m/min)	650 lbs. (295kg)	Class 3 10,001 lbs. (4,540kg)
PSC 4016 EH / H	4,000 lbs. (1814kg)	18,500 ft. lbs. (25.1kNm (2.6mt))	23,235 ft. lbs. (31.4kNm (3.2mt))	1 Hydraulic + 1 Manual (2 Hydraulic Option)	11.4ft (16ft) 3.5m (4.9m)	19.6ft/min (6.0m/min)	650 lbs. (295kg)	Class 3 10,001 lbs. (4,540kg)
PSC 4025 EH / H	4,000 lbs. (1814kg)	18,500 ft. lbs. (25.1kNm (2.6mt))	20,585 ft. lbs. (27.9kNm (2.9mt))	2 Hydraulic	25 ft (7.6m)	19.6ft/min (6.0m/min)	1010 lbs. (458kg)	Class 3 10,001 lbs. (4,540kg)
PSC 5025 EH / H	5,000 lbs. (2286kg)	32,500 ft. lbs. (44.2kNm (4.5mt))	34,580 ft. lbs. (49.3kNm (5.0mt))	2 Hydraulic	25 ft (7.6m)	18.8ft/min (5.7m/min)	1170 lbs. (530kg)	Class 4 14,001 lbs. (6,350kg)
PSC 6025 EH / H	6,000 lbs. (2750kg)	38,500 ft. lbs. (52.2kNm (5.3mt))	43,730 ft. lbs. (58.0kNm (5.9mt))	2 Hydraulic	25 ft (7.6m)	28.0ft/min (8.5m/min)	1280 lbs. (580kg)	Class 5 19,000 lbs. (8,620kg)
PSC 4329 H	8,000 lbs. (3650kg)	43,000 ft. lbs. (58.3kNm (5.9mt))	49,180 ft. lbs. (66.5kNm (6.8mt))	2 Hydraulic	29.1 ft (8.9m)	60ft/min (18.2m/min)	2149 lbs. (975kg)	Class 5 19,000 lbs. (8,620kg)
PSC 6229 H	10,800 lbs. (4900kg)	62,000 ft. lbs. (84.1kNm (8.6mt))	68,900 ft. lbs. (93.2kNm (9.5mt))	2 Hydraulic	29.1 ft (8.9m)	60ft/min (18.2m/min)	2407 lbs. (1092kg)	Class 6 25,000 lbs. (11,340kg)
PSC 7229 H	12,500 lbs. (5700kg)	72,00 ft. lbs. (97.6kNm (10mt))	79,450 ft. lbs. (107.7kNm (11mt))	2 Hydraulic	29.1 ft (8.9m)	60ft/min (18.2m/min)	2731 lbs. (1239kg)	Class 6 25,000 lbs. (11,340kg)
PSC 8629 H	14,000 lbs. (6400kg)	86,000 ft. lbs. (116.6kNm (11.9mt))	94,676 ft. lbs. (128.4kNm (13mt))	2 Hydraulic	29.1 ft (8.9m)	60ft/min (18.2m/min)	2833 lbs. (1285kg)	Class 7 33,000 lbs. (14,970kg)



OS - PSC6025+E / E 09 / 17

Cranes shown in the leaflet are partially optional equipped and do not always correspond to the standard version. All PSC models are subject to change as PALFINGER updates, improves, and technologically advances their cranes and the industry.

Omaha Standard Palfinger
3501 S. 11th Street | Council Bluffs, IA
51501-0876 | USA
T + 1 800 279 2201

PALFINGER.COM